

357000

358000

Clayton Brook Inset - Map 6

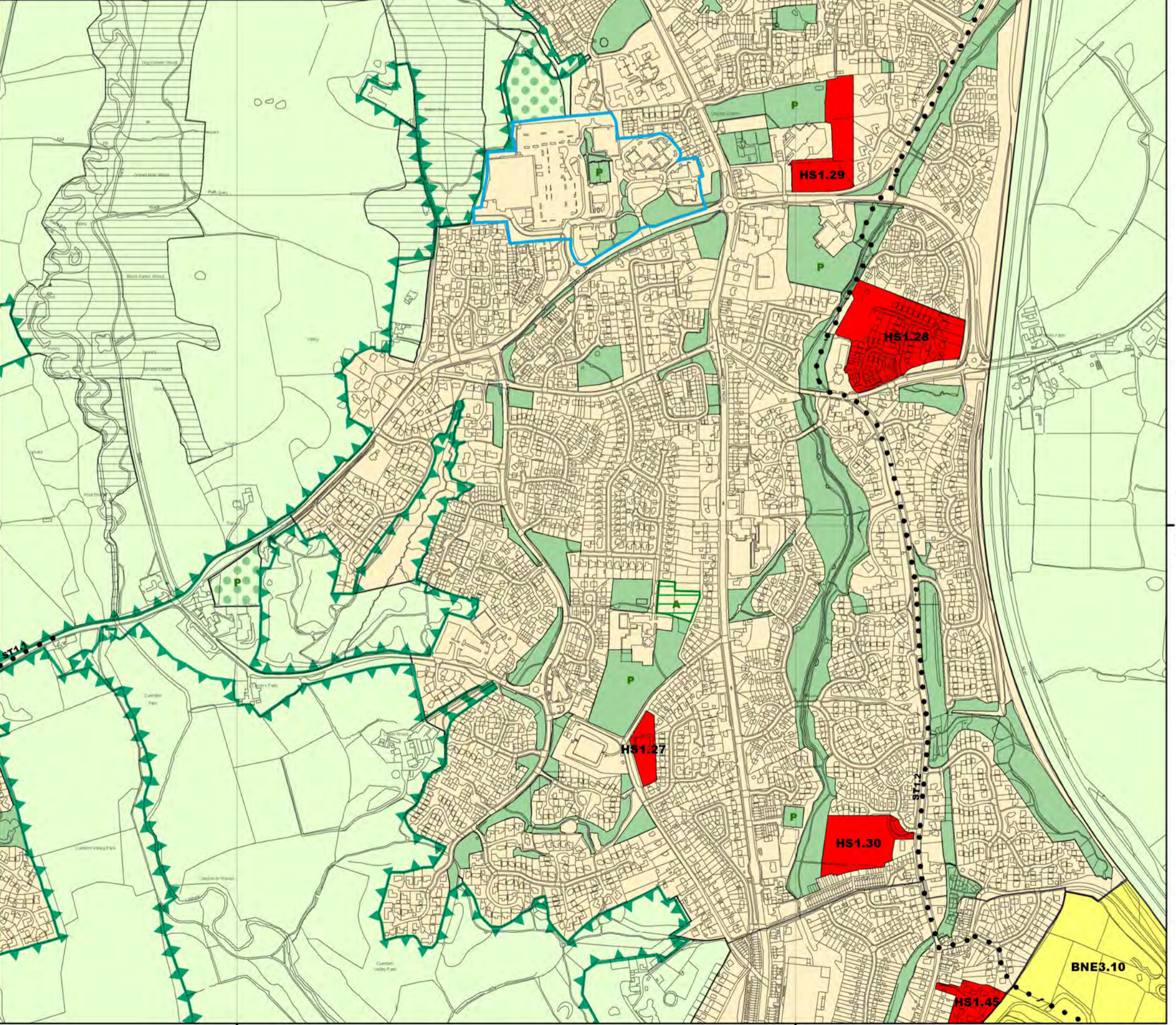
KEY

- BNE3 - Safeguarded Land
- EP7 - District and Local Centres
- HS1 - Housing Allocations
- HW2 - Existing Open Space
- HW2 - Existing Open Space
- P HW2 - Existing Sport and Recreational Facilities
- P HW2 - Existing Sport and Recreational Facilities
- HW3 - Valley Parks
- HW5 - New Allotments
- ST1 - New Cycle Routes
- V1 - Settlement Areas
- Chorley Borough Boundary
- Biological Heritage Sites
- Greenbelt
- Outside Local Plan Area



Scale 1:7,500

SOUTH RIBBLE BOROUGH



357000

358000